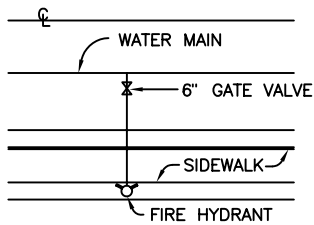
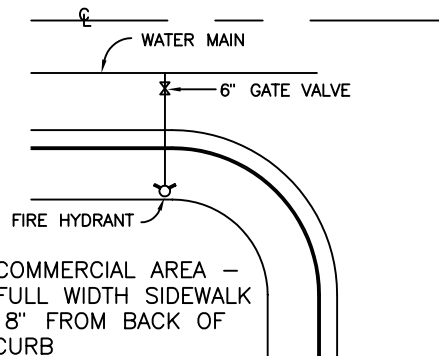


RESIDENTIAL – SIDEWALK
AT BACK OF PARKWAY
18" FROM BACK OF CURB



RESIDENTIAL – SIDEWALK
ADJACENT TO CURB
12" FROM BACK OF WALK

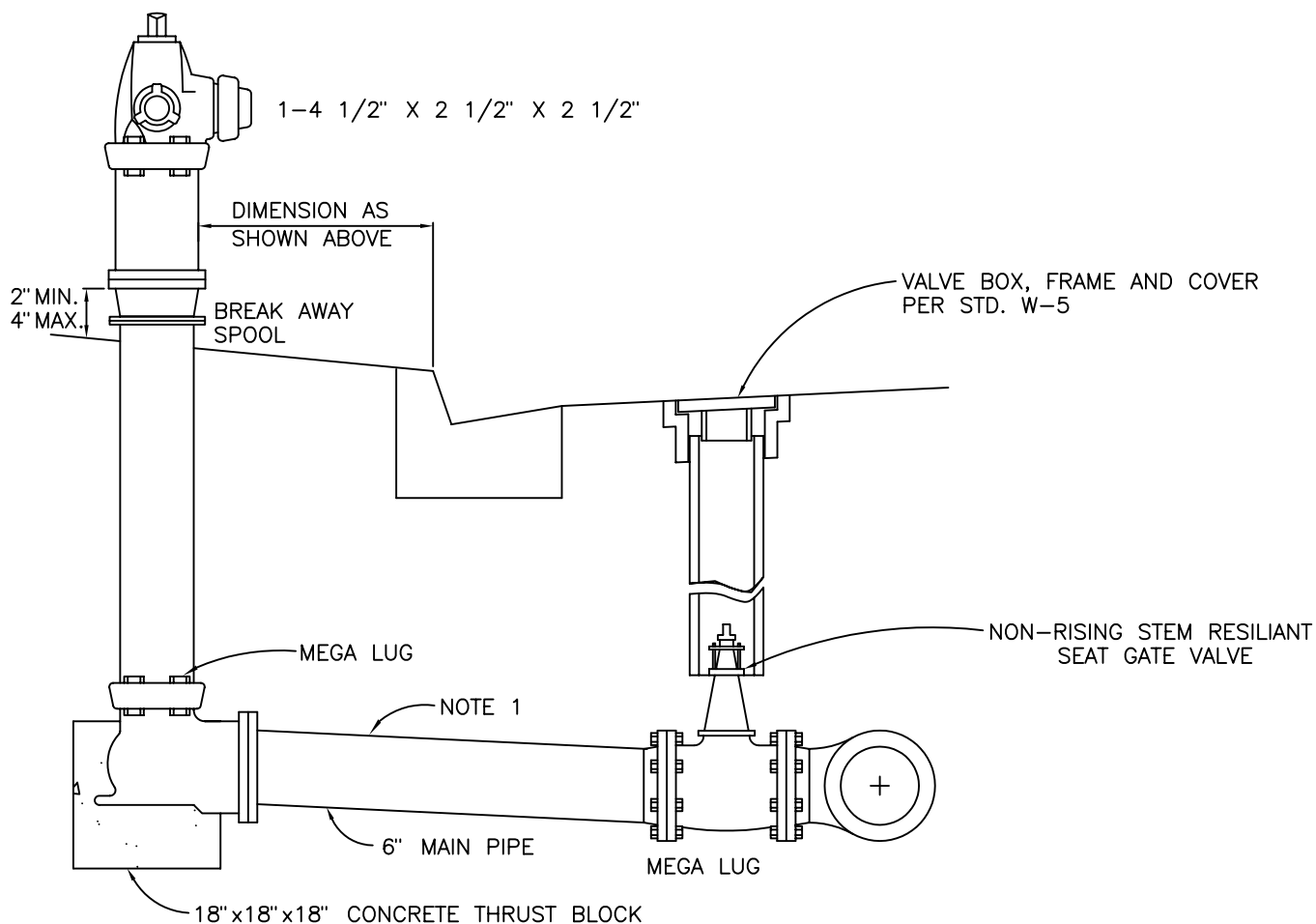


COMMERCIAL AREA –
FULL WIDTH SIDEWALK
18" FROM BACK OF
CURB

HYDRANT LOCATION PLAN

NOTES:

1. HYDRANT RUN BETWEEN GATE VALVE AND 90 DEGREE BEND SHALL RISE NOT MORE THAN $1/4"$ PER FOOT SO AS TO ADJUST ELEVATION OF HYDRANT RISER FLANGE, UNLESS DIRECTED OTHERWISE BY CITY ENGINEER.
2. WATEROUS PACER MUELLER OR AVK DRY BARREL TYPE COMPLETE WITH 36" BURY HUB FOR RUBBER RING.



FIRE HYDRANT

REVISIONS
JUNE 1993
03-23-10

CITY OF KERMAN

STD.
NO.
W-6